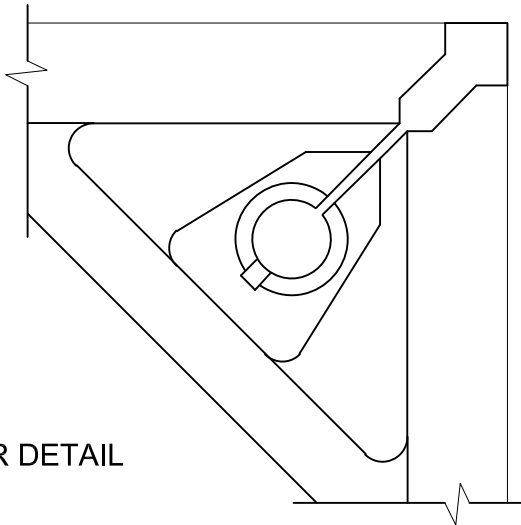
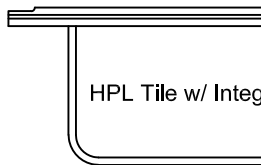


TOP VIEW



CORNER DETAIL



HPL Tile w/ Integral Trim

**SPECIFICATIONS**

*General information*

- 60cm module. Panel weight : 12.0 lbs./ft<sup>2</sup> (58.6 kg/m<sup>2</sup>) bare.
- 1.25 inches (32 mm) deep with no covering.
- All steel welded construction filled internally with a cementitious core material.
- Protected from corrosion by an epoxy paint finish.
- Class A flame spread rating.
- Non-combustible material.

**UNDERSTRUCTURE OPTIONS**

- 120cm Bolted Stringer With Tacke Welded Heads

**COVERING OPTIONS**

Tile factory laminated with integral trim edge

- 1.5mm HPL \_\_\_\_\_ (Color) \_\_\_\_\_
- 1.5mm Conductive HPL \_\_\_\_\_ (Color) \_\_\_\_\_
- 3mm HPL \_\_\_\_\_ (Color) \_\_\_\_\_
- 3mm Conductive HPL \_\_\_\_\_ (Color) \_\_\_\_\_

**System Performance Criteria**

System performance criteria are the most important to consider because they represent the performance in a typical installation. Panel only criteria such as concentrated load is often used to specify floor systems however, the test is not representative of an actual installation because it is performed with the panel resting on blocks, not actual understructure.

System Performance Criteria (Tested on Actual Understructure)*							
System Type	Understructure	SYSTEM WEIGHT	STATIC LOADS		ROLLING LOADS		IMPACT LOADS
			Design Loads	Safety Factor (min 2.0)	10 Passes	10,000 Passes	
ConCore 2500-60cm	Stringer	13.5 lbs / ft <sup>2</sup> 65.8 kg/ m <sup>2</sup>	2500 lbs 1134 kg	Pass	1500 lbs 680 kg	2000 lbs 907 kg	150 lbs 68 kg

\*System load definitions and test procedure descriptions can be found in the Standard Product Tests and Methodology Guide located in the Resources section of Tate's web-site, [www.tateaccessfloors.com](http://www.tateaccessfloors.com).