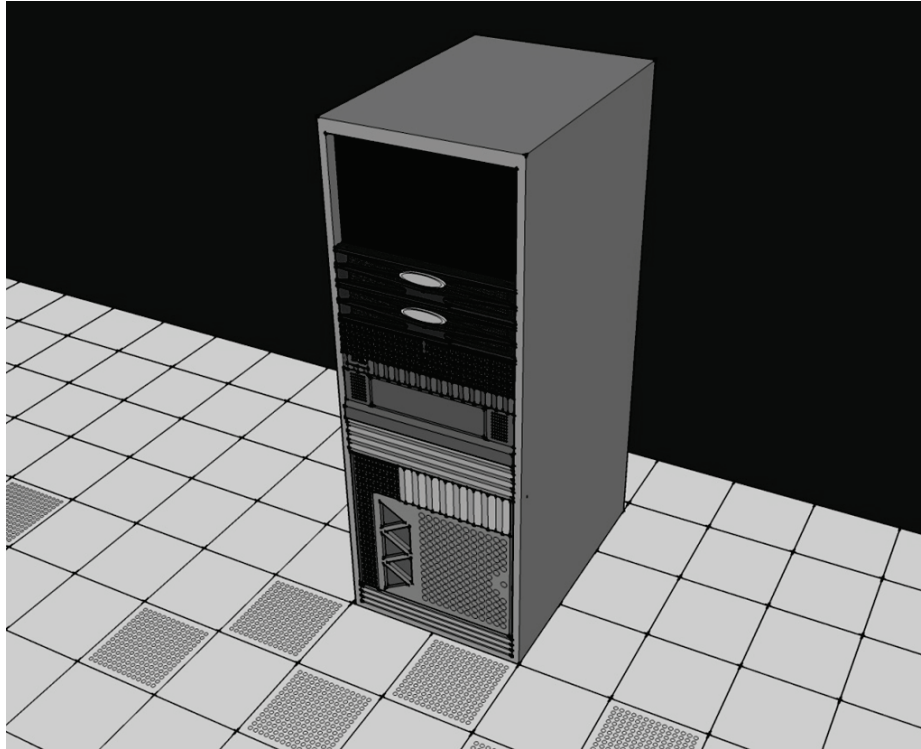


## INSTALLATION GUIDE





## **Please Help Us Improve This Manual**

We would be very interested to hear any comments you might have on this new installation manual. We are particularly interested in learning of omissions or subjects that are unclear. Please call, fax, or e-mail and direct your comments to Technical Service. Thank you very much for your assistance.

Phone: (410) 799-4200

Fax: (410) 799-4207

E-Mail: [TateInfo@Tateaccessfloors.com](mailto:TateInfo@Tateaccessfloors.com)

## TABLE OF CONTENTS

1. Overview.....	3
2. Safety and Quality Assurance....	4
3. Cautions and Warnings.....	4
4. Components .....	5
5. Assembly .....	5

## 1. Overview

The IT Rack Modular Blanking Panel is best way to eliminate the migration of hot and cold air through the IT equipment.

This innovative 27 U sheet is designed to easily be broken apart into individual U's by marking individual U's on the back for Tate Modular.

The 27U Sheet bends and snaps at every 1U increment to easily blank wide and small gaps for efficient data center design.

The Modular Blanking Panel can then be installed with easy to use snap on brackets or screws.



## 2. Safety and Quality Assurance

The following recommendations should be carefully observed as part of any IT Rack Modular Blanking Panel installation. In particular, the safety of the installers must be placed ahead of all other considerations. Some of the following warnings or cautions have been highlighted in the appropriate sections of the manual.

- **DO** read this Installation Guide thoroughly prior to beginning any work.
- **DO NOT** cut the blanking panel with a dull knife or scissors.
- **DO NOT** cut toward yourself or anyone else.
- **DO NOT** cut on a surface that is not made for cutting.
- **DO NOT** cut directly on top of any floor tile.
- **ALWAYS** wear personal protective equipment (PPE) when cutting. PPE includes: Gloves and Safety eyeglasses.
- **ALWAYS** wear an ESD strap when installing.

## 3. Cautions and Warnings

This manual contains important information of the installation of your IT Rack Modular Blanking Panels. We strongly recommend that you read and follow the instructions contained in this manual.

At several points in the manual there may be items of special interest or significant impact which are highlighted by one of the following notices.

### Warning:

Hazards or unsafe practices that could cause personal injury or death.



### Caution:

Hazards or unsafe practices that could cause product damage.



### Note:

Significant points of interest.

## 4. Components

The major components for the door kit are:

- Black Fire Rated 27U Blanking Panel
- Connecting brackets.
- 8 x #12-24 Screws for attachment

## 5. Assembly

### Estimated Time Requirement for Unpacking/Assembly/Installation

The experienced installer of the Modular Blanking Panels should plan on approximately 7 minutes for unpacking, assembly and installation. A single individual is required for installation. Inexperienced installers should double the above time estimate.

1. Measure and break or cut the 27 U sheet to match opening.
2. **Always** cut away from yourself.
- 3-6. **Wearing the ESD strap**, attach the blanking panel to the rack with supplied connecting brackets. Repeat until all openings are sealed with Modular Blanking Panel (See figures 1-6 below for additional information.)

