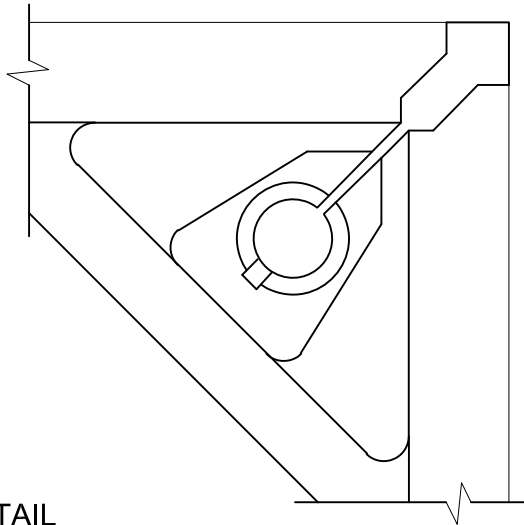
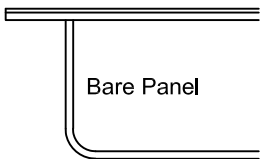


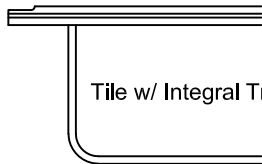
TOP VIEW



CORNER DETAIL



Bare Panel



Tile w/ Integral Trim

## SPECIFICATIONS

### General information

- 60cm module. Panel weight : 7.0 lbs./ft<sup>2</sup> bare.
- 1.25 inches (32 mm) deep with no covering
- All steel welded construction
- Protected from corrosion by an epoxy paint finish.
- Class A flame spread rating.
- Non-combustible material.

## UNDERSTRUCTURE OPTIONS

- Freestanding
- Posilock
- 120 cm Bolted Stringer
- 60 cm Bolted Stringer

## COVERING OPTIONS

Tile factory laminated with integral trim edge

- 1/8" HPL \_\_\_\_\_ (Color) \_\_\_\_\_
- 1/16" HPL \_\_\_\_\_ (Color) \_\_\_\_\_
- 1/8" Conductive HPL \_\_\_\_\_ (Color) \_\_\_\_\_
- 1/16" Conductive HPL \_\_\_\_\_ (Color) \_\_\_\_\_

For additional laminate options contact Inside Sales

Bare Painted Panel Options

- Bare Painted Finish to accept carpet tile application

### System Performance Criteria

System performance criteria are the most important to consider because they represent the performance in a typical installation. Panel only criteria such as concentrated load is often used to specify floor systems however, the test is not representative of an actual installation because it is performed with the panel resting on blocks, not actual understructure.

System Performance Criteria (Tested on Actual Understructure)*							
System Type		SYSTEM WEIGHT	STATIC LOADS		ROLLING LOADS		IMPACT LOADS
Panel	Understructure		Design Loads	Safety Factor (min 2.0)	10 Passes	10,000 Passes	
All Steel 1500-60cm	Bolted Stringer	8.5 lbs / ft <sup>2</sup> 41.4 kg / m <sup>2</sup>	1500 lbs 680 kg	Pass	600 lbs 272 kg	600 lbs 272 kg	150 lbs 68 kg

\*System load definitions and test procedure descriptions can be found in the Standard Product Tests and Methodology Guide located in the Resources section of Tate's web-site, [www.tateaccessfloors.com](http://www.tateaccessfloors.com).