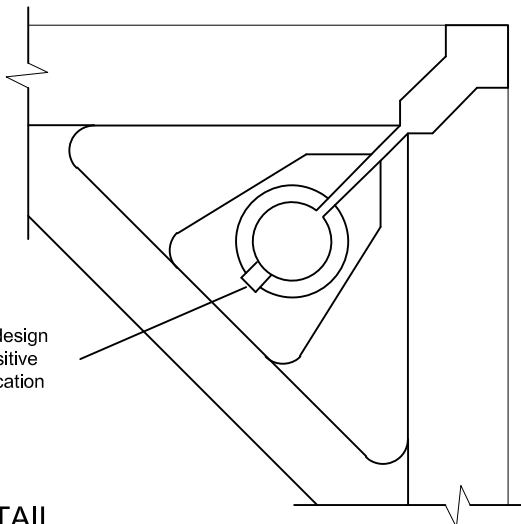
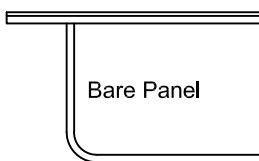


TOP VIEW

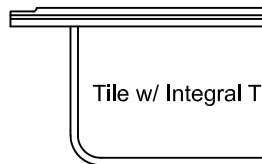


Integral shape pocket design and locating tab for positive lateral retention and location with or without screws

CORNER DETAIL



Bare Panel



Tile w/ Integral Trim

### System Performance Criteria

System performance criteria are the most important to consider because they represent the performance in a typical installation. Panel only criteria such as concentrated load is often used to specify floor systems however, the test is not representative of an actual installation because it is performed with the panel resting on blocks, not actual understructure.

| System Performance Criteria (Tested on Actual Understructure)* |                 |   |                    |                         |                   |                   |                  |
|--|-----------------|---|--------------------|-------------------------|-------------------|-------------------|------------------|
| System Type  | Understructure  | SYSTEM WEIGHT                                       | STATIC LOADS       |                         | ROLLING LOADS     |                   | IMPACT LOADS     |
|  |                 |   | Design Loads       | Safety Factor (min 2.0) | 10 Passes         | 10,000 Passes     |                  |
| All Steel 1000-60cm  | Posilock        | 5.5 lbs / ft <sup>2</sup><br>27 kg / m <sup>2</sup> | 1000 lbs<br>454 kg | Pass                    | 400 lbs<br>181 kg | 400 lbs<br>181 kg | 100 lbs<br>45 kg |
|  | Bolted Stringer | 6.0 lbs / ft <sup>2</sup><br>30 kg / m <sup>2</sup> | 1000 lbs<br>454 kg | Pass                    | 400 lbs<br>181 kg | 400 lbs<br>181 kg | 100 lbs<br>45 kg |

\*System load definitions and test procedure descriptions can be found in the Standard Product Tests and Methodology Guidelocated in the Resources section of Tate's web-site, [www.tateaccessfloors.com](http://www.tateaccessfloors.com).

## SPECIFICATIONS

### General information

- 60cm module. Panel weight : 4.25 lbs./ft<sup>2</sup> bare.
- All steel welded construction
- Protected from corrosion by an epoxy paint finish.
- Class A flame spread rating.
- Non-combustible material.

## UNDERSTRUCTURE OPTIONS

- Freestanding
- Posilock
- 120 cm Bolted Stringer
- 60 cm Bolted Stringer

## COVERING OPTIONS

Tile factory laminated with integral trim edge

- 1/8" HPL \_\_\_\_\_ (Color) \_\_\_\_\_
- 1/16" HPL \_\_\_\_\_ (Color) \_\_\_\_\_
- 1/8" Conductive HPL \_\_\_\_\_ (Color) \_\_\_\_\_
- 1/16" Conductive HPL \_\_\_\_\_ (Color) \_\_\_\_\_

For additional laminate options contact Inside Sales

Bare Painted Panel Options

- Bare Painted Finish to accept carpet tile application
- Bare Painted Finish to accept PosiTile application