

Hinged Lid Is Recessed For Carpet Insert And Opens Wide For Easy Access To Devices. Lid Closes Flush With Floor While In Use. Remove Lid When Installing Wiring To Avoid Damaging The Lid

Features

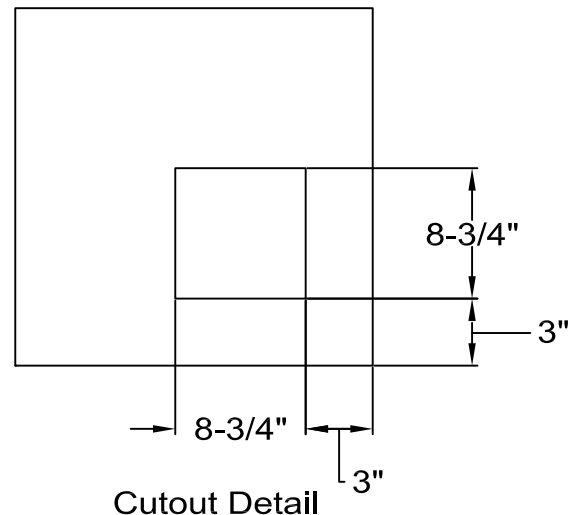
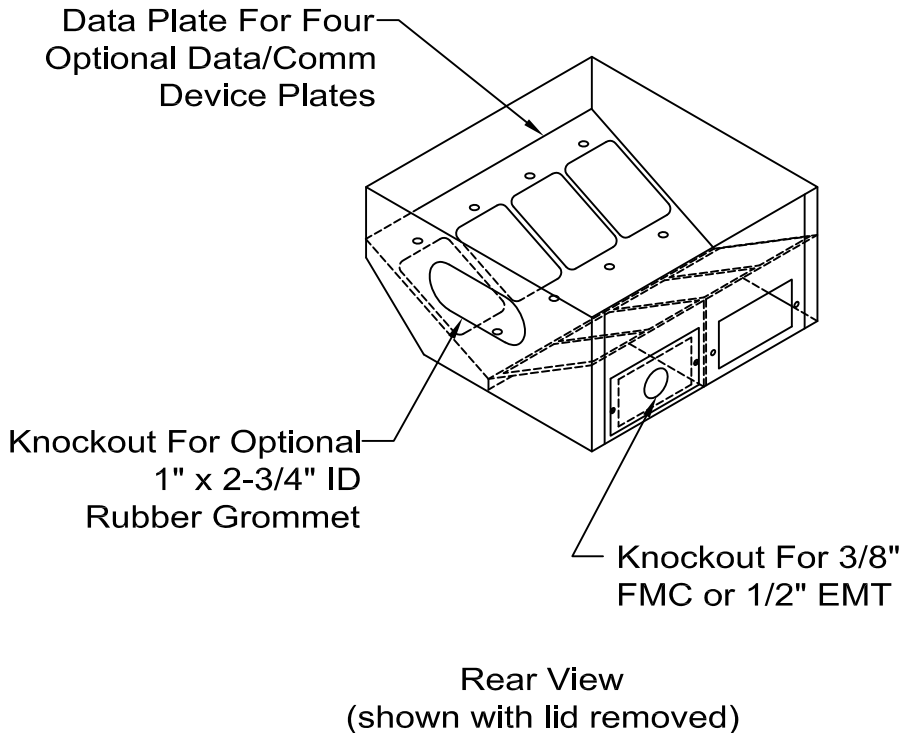
Provides Interconnection Point Between Access Floor Wiring Systems And Workstation Equipment Cables

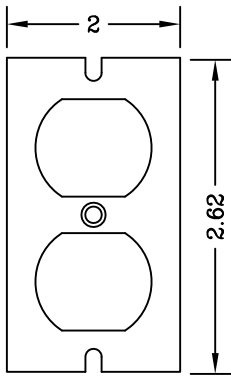
Electrical

Rated At 20 Amp/120V AC For Duplex Receptacles And Is U.L. Listed

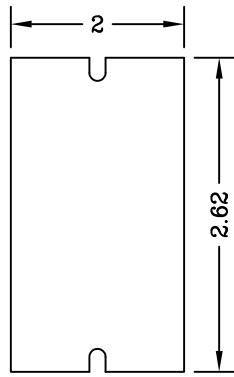
Mounting

Mounts Into 8-3/4" Square Cutout In Floor Panel Requires A Minimum 5" FFH.

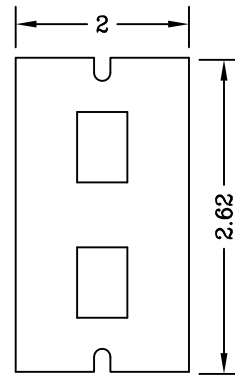




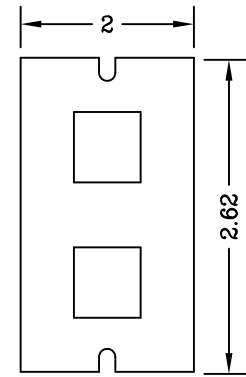
Part No. CAN12100
Device Plate For
Duplex Receptacle



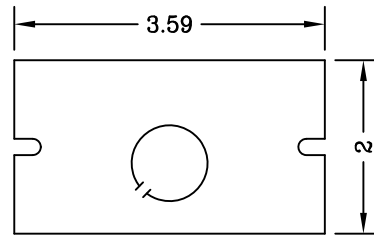
Part No. CAN12101
Blank Plate



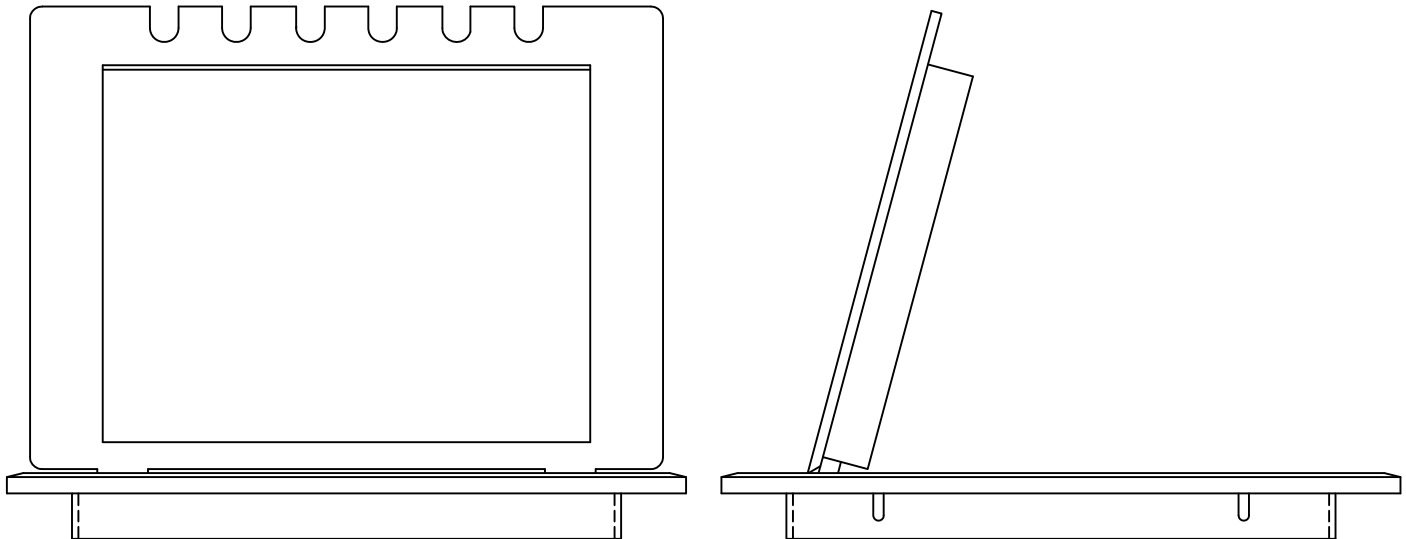
Part No. CAN12102
Device Plate For
Mod. Jack Couplers



Part No. CAN12105
Device Plate For
Lucent Univ. Collars



Part No. CAN12104
Cable Connector Plate
Knockout for 1/2" Conduit
POWER ENTRY PLATE



Part No. CAN12103
Lid and Frame
(Part No. CAN12106 for Lid Only)