

## SPECIFICATIONS

### General information

- Die cast aluminum construction
- Interchangeable with laminated ConCore® and All Steel panels
- 56% open area
- Panel size: 60cm square
- Panel height at corner: 35mm. Total panel height 44mm.
- Panel weight: 23 kg/m<sup>2</sup>
- Non-combustible material
- Class A flame spread rating
- Available with or without damper
- Damper with can be adjusted from the top to restrict air flow by up to 100%
- Removeable with portable lifting device

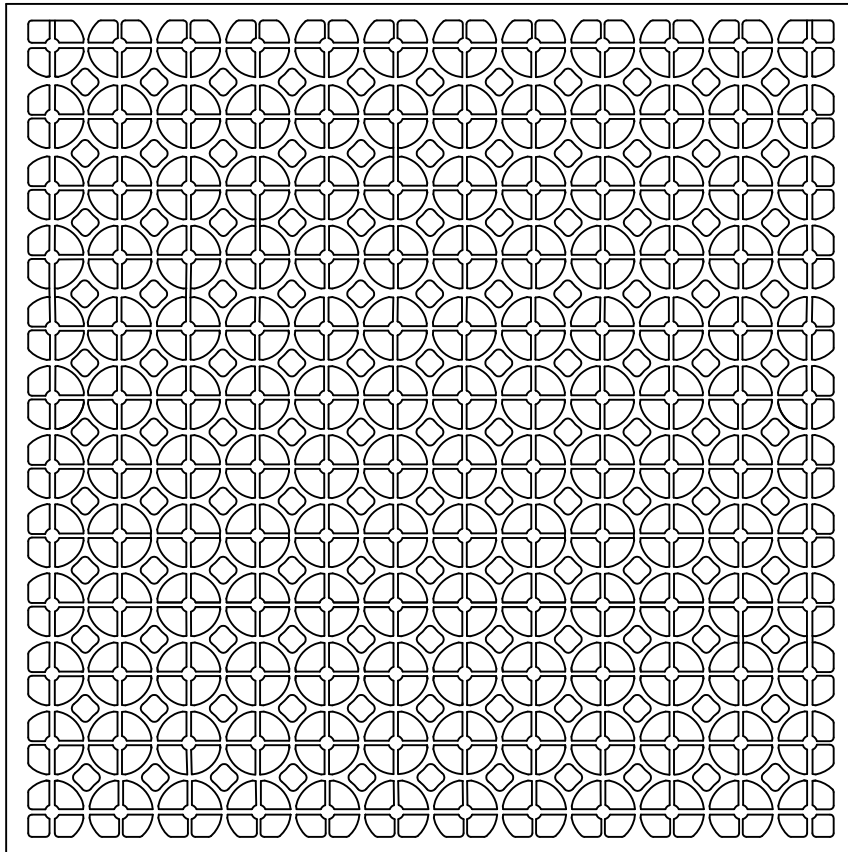
## UNDERSTRUCTURE OPTIONS

- 60cm Heavy duty bolted stringer system
- 120cm Heavy duty bolted stringer system

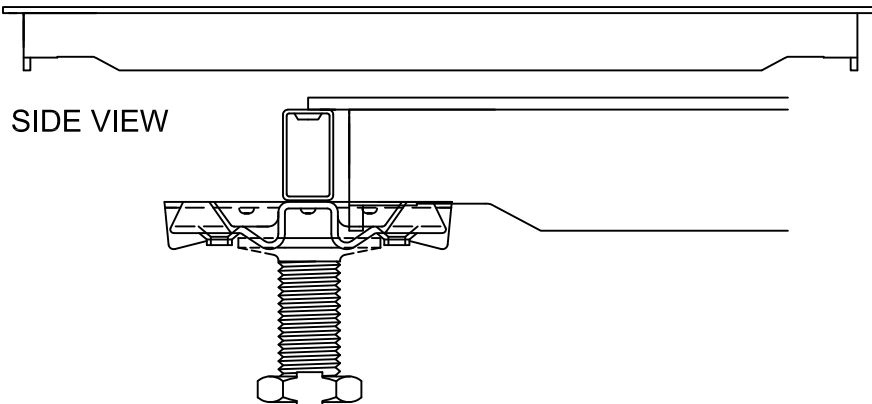
## COATING OPTIONS

- Epoxy powder coat (conductive)

Static Pressure (In. H <sub>2</sub> O)	Air Volume (CFM)	Air Volume with damper (CFM)
0.02	852	460
0.04	1212	654
0.05	1344	725
0.06	1468	792
0.08	1696	916
0.1	1884	1017
0.12	2068	1117
0.14	2232	1205
0.16	2408	1300
0.18	2596	1401
0.2	2732	1475



TOP VIEW



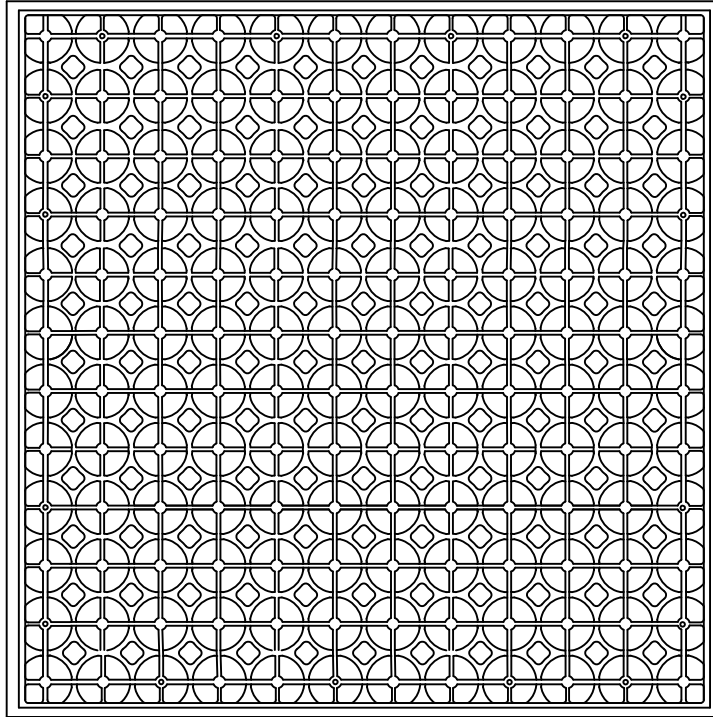
SIDE VIEW

### System Performance Criteria

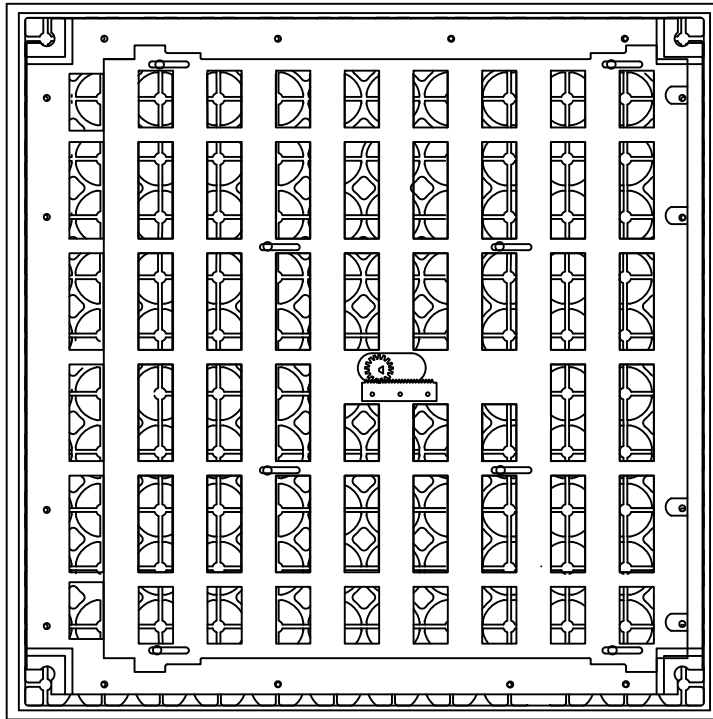
System performance criteria are the most important to consider because they represent the performance in a typical installation. Panel only criteria such as concentrated load is often used to specify floor systems however, the test is not representative of an actual installation because it is performed with the panel resting on blocks, not actual understructure.

System Performance Criteria (Tested on Actual Understructure)*							
System Type	Understructure	SYSTEM WEIGHT	STATIC LOADS		ROLLING LOADS		IMPACT LOADS
			Design Loads	Safety Factor (min. 2.0)	10 Passes	10,000 Passes	
Aluminum Grate	Heavy-Duty Bolted Stringer	30.5 kg / m <sup>2</sup>	1000 lbs 454 kg	Pass	1000 lbs 454 kg	800 lbs 363 kg	100 lbs 45 kg

\*System load definitions and test procedure descriptions can be found in the Standard Product Tests and Methodology Guidelocated in the Resources section of Tate's web-site, [www.tateaccessfloors.com](http://www.tateaccessfloors.com).



BOTTOM VIEW



BOTTOM VIEW WITH  
DAMPER